



CARBON FIBER STRENGTHENING

The integrity of your foundation is our specialty. Guaranteed.



WHAT IS CARBON FIBER REPAIR?

Since 1987 Western Construction Systems has been a local Northwest based specialty foundation repair contractor. One of our specialties is foundation strengthening. One of our primary foundation strengthening materials is CARBON FIBER. WCS proudly installs Simpson Strong-tie composite strengthening systems.

Western Construction Systems is your full-solution partner for Fiber-reinforced polymer (FRP) Composite Strengthening Systems.

COMMERCIAL AND RESIDENTIAL SERVICES

Fiber-reinforced polymer (FRP) systems are simply defined as high-strength and lightweight reinforcements created by combining carbon (CFRP) or E-glass fibers with a polymer material (epoxy). The performance characteristics of FRP strengthening have become increasingly popular in construction and retrofit applications, specifically in aging, damaged, deteriorating or overloaded concrete structures.

The primary benefit of FRP systems versus traditional retrofit and repair methods is that significant flexural, lateral, axial or shear strength gains can be achieved with an easy-to-apply composite that does not add significant weight or mass to the structure.

Many of the foundations for which we use this technology to repair are 100+ years old and have no internal reinforcing. Using these systems we can significantly strengthen and provide the lateral reinforcing necessary to extend the life of the foundation and resist lateral forces and seismic activity.

These repair and strengthening methods are some of the most cost effective solutions in the industry.



SECOND GENERATION
FAMILY OWNED COMPANY

NOT A FRANCHISE

1995 WALLACE RD. NW
SALEM, OREGON 97304

CCB# 94222
WA LIC WESTECS899M8



(503) 362-5052

FREE ESTIMATES &
INSPECTIONS.
EST. 1987

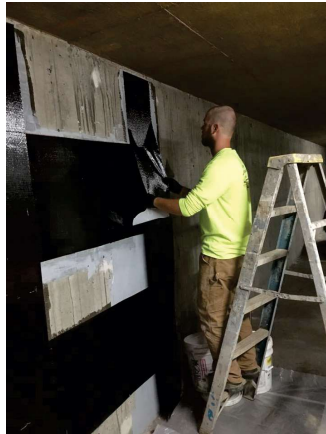


CARBON FIBER STRENGTHENING

The integrity of your foundation is our specialty. Guaranteed.



1890's era brick foundation



Commercial building foundation



Wall reinforcing
Bowling, cracked wall.



Residential foundation.
Badly fractured and bowing wall



**SECOND GENERATION
FAMILY OWNED COMPANY**

NOT A FRANCHISE

**1995 WALLACE RD. NW
SALEM, OREGON 97304**

**CCB# 94222
WA LIC WESTECS899M8**



(503) 362-5052

**FREE ESTIMATES &
INSPECTIONS.
EST. 1987**